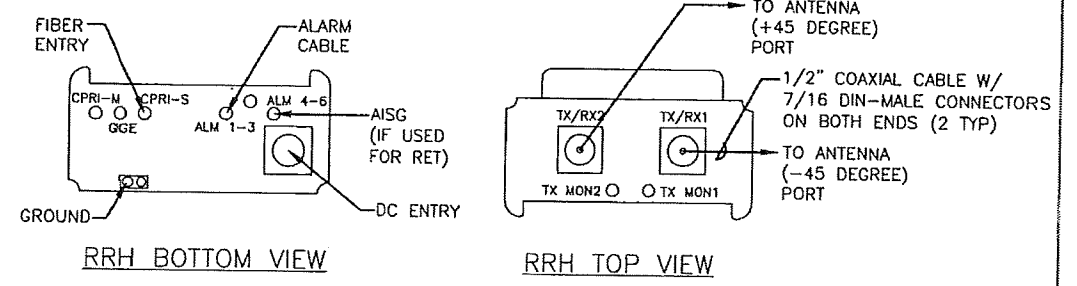
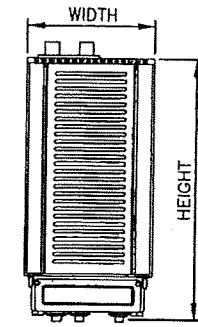


**WEIGHT:**  
 EMPTY W/BLANK DOOR = 80lbs  
 EMPTY W/ HEAT EXCHANGER = 120lbs  
 EQUIPMENT (VARIES) = 400/lbs MAX  
 CABINET TOTAL (MAX) = 600lbs

- NOTES:**
1. DOOR HINGE MAY BE REVERSED
  2. MINIMUM ANCHOR SIZE MUST BE 1/2" DIA.
  3. AN ISOLATOR BASE IS REQUIRED WHEN MOUNTING DIRECTLY ON CONCRETE PAD.

9412 TYPE 2 CABINET

DETAIL 1  
 NTS



SIZE AND WEIGHT TABLE

RRH	WIDTH	DEPTH	HEIGHT W/O CABLE MANAGEMENT COVER	WEIGHT W/O BRACKET
RRH 700 MHz 2X40 (80W)	12.2"	10.8"	21"	51 LBS.
RRH AWS 2X40 (80W)	12"	9"	25"	43 LBS. (W/O SOLAR SHIELD)

NOTE: DIMENSIONS INCLUDE MOUNTING BRACKET, SOLAR SHIELD AND CONNECTORS.

MINIMUM CLEARANCE TABLE

RRH CABINET	CLEARANCES (INCHES)	COMMENTS
FRONT	36"	INSTALLATION ACCESS
REAR	2"	ZERO REAR CLEARANCE IS ALLOWED USING SUPPLIED MOUNTING BRACKETS
RIGHT	4"	AIR FLOW
LEFT	4"	AIR FLOW
TOP	12"	AIR FLOW
BOTTOM	12"	CONDUIT ROUTING

ALCATEL-LUCENT 9442 REMOTE RADIO HEAD (RRH)

DETAIL 1104  
 NTS

**BECHTEL COMMUNICATIONS, INC.**  
 200 NORTH WARNER ROAD  
 SUITE 160  
 KING OF PRUSSIA, PA 19406  
 PHONE: (610) 233-1738

**Dewberry**  
 Dewberry-Goodkind, Inc.  
 EASTGATE BUSINESS CENTER  
 133 GATHER DRIVE, SUITE F  
 MT. LAUREL, NEW JERSEY 08054  
 PHONE: 609.202.0842  
 FAX: 609.202.0844  
 JOB # 50044612

**SITE NUMBER: PAL01277**  
**FA NUMBER: 10096962**  
**SITE NAME: GOSHENVILLE**  
 1602 EAST STRASBURG ROAD  
 WEST CHESTER, PA 19380

**at&t**  
 NEW CINGULAR WIRELESS PCS, LLC  
 200 NORTH WARNER ROAD  
 KING OF PRUSSIA, PA 19406

NO.	DATE	REVISIONS	BY	CHK	APP'D	SCALE	DESIGNED BY	DRAWN BY	DRAWING NUMBER	REV
1	12/15/11	ISSUED FOR ZONING	MPC	CJZ	ASR	AS SHOWN	EDTV	EDTV	25471-420	1
0	12/09/11	ISSUED FOR ZONING	EDTV	CJZ	ASR				Z-3	

